

Cold Medicine

Column: Listed on chromatogram

Dimension: 50 x 2.1 mm ID

Mobile Phase: MeCN + 0.1% HCOOH:H₂O + 0.1% HCOOH = 35:65

Flow Rate: 0.5 mL/min

Temperature: Ambient

Detection: UV 220 nm

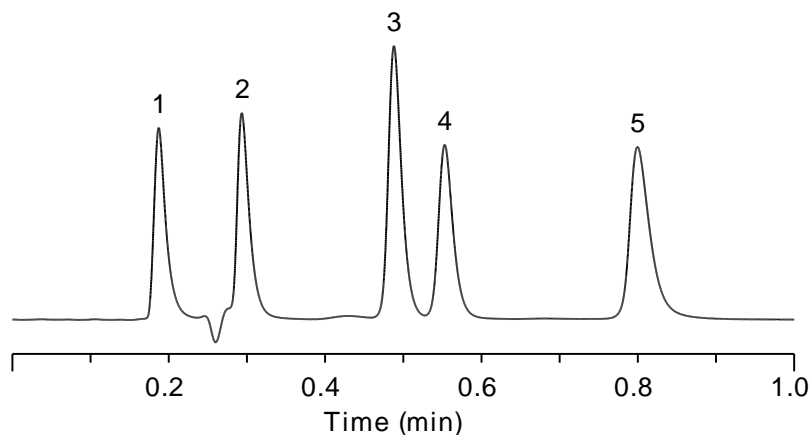
Sample:

1. Doxylamine
2. Acetaminophen
3. Acetanilide
4. Aspirin
5. Salicylic acid

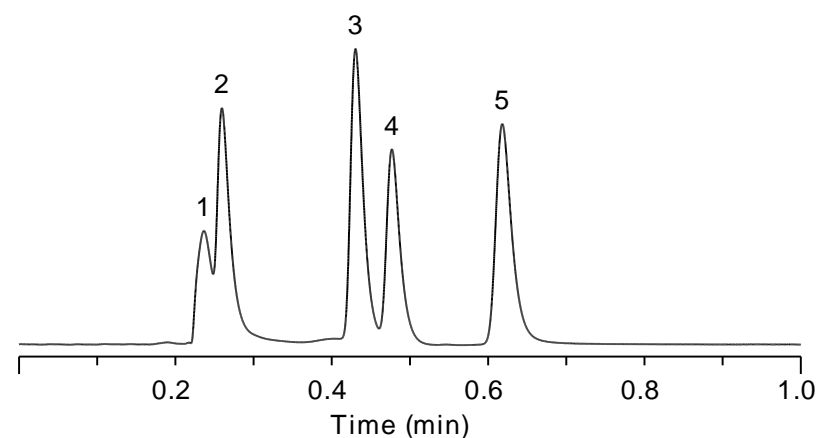
*Eclipse is registered trademarks of Agilent Technologies. Kinetex is registered trademarks of Phenomenex. Acquity is registered trademarks of Waters Corporation. Dikma Technologies is not affiliated with the above companies.

Cold Medicine

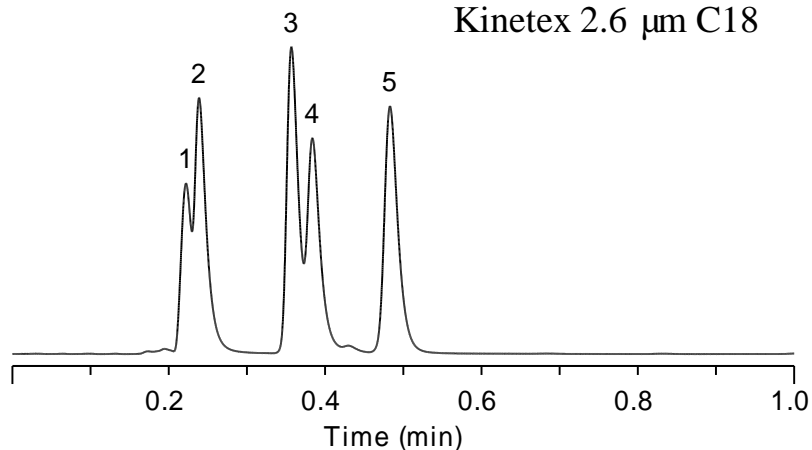
Endeavorsil™ 1.8 μm C18



Eclipse Plus RRHD 1.8 μm C18



Kinetex 2.6 μm C18



ACQUITY UPLC® HSS T3 1.8 μm C18

